

Vision

Pastor Dave's Corner

I sat in Karen's office at MSU working on a project for the International Student office. She was in her first year as the Assistant Director, single and determined to prove herself. It was February and Valentine's Day was just around the corner. "I don't like to get Valentines," she said in an off-handed manner. "Do something nice for me some other time. It seems more genuine."

Charlie Brown trudges to the mailbox. Stretching on his tip toes he peers into the void. Slumping down on the ground he mutters, "No Valentine."

Valentine's Day is billed as a time for love: a time for couples to show their affection for one another. It's all hearts and roses and chocolate. Romance is great, if you are a participant. It loses its luster if you are a spectator. In 1966 The Beatles released the song Eleanor Rigby, for all the lonely people. The first stanza sets the stage.

*Eleanor Rigby, picks up the rice/ In the church where a wedding has been/ Lives in a d r e a m
Waits at the window, wearing the face/ That she keeps in a jar by the door/ Who is it f o r ?
All the lonely people/ Where*

do they all come from?/ All the lonely people/ Where do they all belong?

We live in a world of lonely people. They come in all shapes and sizes. They are married, single, divorced, widowed. They are affluent and poor: well-known and unknown. They all share a common bond. There is a void in their lives. The vast majority of us have been numbered among that crowd at some point in our lives. Each of us, in our own way, can identify with Karen and Charlie Brown.

We don't have to let loneliness dominate our lives. No matter what our situation we can experience a sense of acceptance and belonging.

It begins by accepting the reality that we are loved by God. In our world today we tend to begin with romance. If that is not our experience we feel left out. But if we start in a different place we discover that there is a path out of loneliness. God loves us with an everlasting love. We don't have to do anything to earn that love. He gives it to us freely and abundantly. Our part is to recognize and accept that love. For God so loved the world that he gave his one and only Son, that whoever believes in him



A Word for Eleanor Rigby

shall not perish but have eternal life. (John 3:16) This is more than a theological concept. This is the very bedrock of our existence. The more we understand the love that Christ has for us, the less we will be dragged down by the absence of some lesser substitute. Paul understood that when he wrote to the Ephesians.

For this reason I kneel before the Father, from whom his whole family in heaven and on earth derives its name. I pray that out of his glorious riches he may strengthen you with power through his Spirit in your inner being, so that Christ may dwell in your hearts through faith. And I pray that you, being rooted and established in love, may have power, together with all the saints, to grasp how wide and

(Continued on page 17)

Inside this issue:

Adult Ministries	2
Worship Notes	6
Youth Group News	7
Young Adults Ministry	9
Children's Ministry	11
Senior Adults	15
Missions Page	16

Special points of interest:

- Choose your small group
- Men's Fraternity begins
- Bethel Servant Corps
- Faith-Filled Conference for Women
- Abraham Bible Study
- Bob & Barb Bartz Visiting



Adult Ministries by Pastor Bruce

Good Stuff for Your GROWTH

Groups, Classes, etc.

Please contact the group leader if you have questions or would like to let them know you would like to be part of their group.

Sunday

- 9:45-Christian Kohs at Church A study in **Galatians** Starts Feb. 6
507-696-2286 or christian.kohs@proresgroup.com
- 9:45-Keven & Terry Kroehler at Church On **Marriage** Using Sacred Marriage by Gary Thomas. Starts Feb. 6 507-248-9617 or ktzabt@frontiernet.net
- 11:00 a.m. – Don & Karen Ahlstrom at Church What’s So Amazing about Grace? by Philip Yancey 507-345-1173 or karedonah@charter.net Starts Feb. 6
- Sunday afternoon Games/Noomas ... Fellowship around table games and the teachings in the 10-12 minute “Nooma” videos. First session is Sunday, Feb. 6, at 3 p.m. This group will meet every other Sunday at Pastor Bruce and Donna Nelson’s home. adults 507-388-1509 PastorBruce@BethelMankato.com
- 5 p.m.–Torrey and Julie Carlbom FULL
- 6 p.m.-Mark & Sandy Lindahl starts Feb. 13 (665 Warren St., Mankato) adults 507-388-8407 or raskal@hickorytech.net

“Check out all the small groups that are happening. There should be one for you.”

Monday

- 9:00 a.m. Men’s Sermon Discussion group at church
- 6:30 p.m.–Roberta Olson Hidden in Plain Sight: the Secret of More by Mark Buchanan (809 Lower Johnson Cir. St. Peter) kids-ok Starts Feb. 7 507-380-6681 or riolson1@yahoo.com

Tuesday

- 6:30 p.m.—Glenn & Ann Winch Crazy Love: Overwhelmed by a Relentless God by Francis Chan (311 Royal Rd. Mankato,56001) kids-ok 507-344-0199 or pastorglenn@BethelMankato.com Starts Feb. 1
- 7:00 p.m.–Cindy Hoines at church ... Precept studies in **Genesis** See more details next page ...Starts Feb. 1. Workbooks are \$13.50. Contact Cindy with questions and/or to order your book. 507-345-8069 hoines@hickorytech.net

Wednesday

- 6:00 A.M.! – Men’s Fraternity at Church The Quest for Authentic Manhood by Robert Lewis See more details next page ... Michael Anderson 612-360-7800 or michael@teamanderson.us Starts Feb. 2
- 6:30 p.m. - Dave and Suanne Banfield Connecting with God’s Family Starts Feb. 3 (58198 197th Ln., Mankato) adults 507-388-4432 or banfield@hickorytech.net



Check the church website for more groups ...

Adult Ministries-Continued

Bible Studies-

Cindy Hoines is offering the 2nd part of a 10 week Precept-Upon-Precept study on the book of Genesis. She will be covering the flood and the nations beginning February 1st at 7:00 p.m. in room #11. This group will meet for 5 weeks.

On March 8th they will begin a 6 week course titled "Becoming a Friend of the Faithful God: A Study on Abraham."

Learn the principles and truths from the life of Abraham, the friend of God, that will ground you in your faith, challenge you in your walk, and give you hope in your future. In the life of Abraham, we see God's choosing and the further unfolding of His redemptive plan. We learn more about God's character and His relationship with us in Abraham's example. Learn how man becomes righteous, how

God keeps His promises, and how God protects those who are His. Take comfort in your covenant partner and rest in His faithfulness.

Books for this course will need to be ordered **no later than February 15th**. The cost of the workbook is \$13.50. Contact Cindy Hoines if you are interested in registering for this study: hoines@hickorytech.net or 507-345-8069.



Men's Fraternity

6 a.m. Wednesdays Begins Feb. 2

Men, did you see this invitation and explanation in your e-mail? Hope so and hope you are planning on attending this powerful time for men.

Why 6 am???

By meeting at 6am on a weekday, we avoid all of the conflicts of weeknight schedules, we avoid weekends out of town, and you are able to get to work by 8am.

What is it really about?

From their website, they describe it as: "Men's Fraternity provides men with an encouraging process that teaches them how to live lives of authentic manhood as modeled by Jesus Christ and directed by the Word of God." If you want to learn a bit more, I would encourage you to take a look yourself at: http://www.mensfraternity.com/about/about_mens_fraternity.aspx.

Why do I need this? The long and the short of it, from personal experience, is that this is a powerful way for us as men to learn how to become the men that God intended us to be. Sometimes this means unpacking a little baggage to understand why we are the way we are, and sometimes this means learning more about what God wants for us as husbands, fathers, friends, and leaders. We are called to be the spiritual leaders of our households, but how many of us had the benefit of someone showing us what that really meant? We are also called to leverage our gifts and strengths for ministry and missions, but what exactly does that mean, and how do I really know what that means for me specifically? This curriculum has a way of providing you with valuable insight and motivation, I'm looking forward to going through it again and I hope you will be there with me!

What do I need to do?

1. **If you are planning to come, please respond and confirm so I can make sure to have a book there for you!** Books are \$9.95 each if you are able to contribute. I have ordered a few to start with, but if you respond this week I can still have it there for you on the 2nd.
2. Set it up on your calendar with a notification the day before!

If you have any questions, please feel free to email or call me any time.

Best Regards,

Michael Anderson

Michael@teamanderson.us

612.360.7800

"New group beginning at Bethel: Men's Fraternity."



Adult Ministries-Continued

Bethel Servant Corps

Need help putting your faith in action?
Could you better fulfill God's call to serve?
Bethel Servant Corps is the answer.



*As Christ gave himself for us, we are called to sacrificial servanthood (Matthew 16:24)
You foolish man, do you want evidence that faith without works is useless? (James 2:20)*

What:

Bethel Servant Corps is a new exciting opportunity to share the love and message of Jesus Christ through practical acts of community service and kindness. It is a biblical, fun, simple, and intentional way to make sharing Jesus a lifestyle. By doing no-strings attached acts of kindness just to show God's love, you'll be taking part in one of the lowest risk, highest forms of grace activities available. Different events will held intermittently through the year and be designed so that adults, kids, and anyone can participate effectively - meaning no prior training or preparation on the part of the participant is necessary. Choose to participate once or all, attendance is always optional.

Why:

The concept is simple: intentional acts of kindness in the community with the aim of evangelism opens an unbeliever up to the greatest act of kindness of all: the Gospel.

Many people in our culture today believe that the church is only concerned with getting something from them. By doing these acts and service in our community, we are doing more than just being nice. It is breaking down one of the major barriers by letting people experience the Gospel!

Servant Evangelism is a wonderful expression of the Great Commandment and the Great Commission. Because it doesn't involve being an "expert" Christian, it is great for people who may find it difficult to share their faith or even for the most seasoned Christian.

When & Where:

Saturday, February 19, 10:00 am - noon
Hillcrest Health Care Center
714 Southbend Avenue, Mankato (South off of HWY 169)

We will be going to the Hillcrest Health Care Center to visit and play games with senior residents over refreshments and offer conversation and care to those who really need it.

To sign up online, visit: <http://www.meetup.com/Christian-Servant-Corps/Mankato-MN/61495/>

Or alternatively, contact Jerry Oman at jerryoman22@yahoo.com or 507-995-3330.

"Bethel Servant Corps is a new exciting opportunity to share the love and message of Jesus Christ through practical acts of community service and kindness."

Adult Ministries-Continued

Summit Rewind

Summit Rewind

... Wed. Feb. 9

This month we will view and discuss **WHAT MOTIVATES US: NOT WHAT YOU THINK**

a talk by Daniel Pink. For a really neat 10 minute summary, check out the video at

<http://www.youtube.com/watch?v=u6XAPnuFjJc>

Bring your lunch at noon. The coffee will be on.

Rewind only at noon.

Hope to see men at 6:00 a.m. at Men's Fraternity.

Please feel free to invite someone to join you at the Rewind at noon.



Global Leadership Summit



August 11-12, 2011 ... Global Leadership Summit

Save the date!

Live satellite feed again from Bethel.

Save the date!

"Mark your calendars for the 2011 Global Leadership Summit."

DIVORCE Care

Do you know someone who is hurting due to marital separation and/or divorce?

It is very likely that they would be greatly blessed by some sound Biblical teaching and some caring support and encouragement from others who

have also suffered loss. Please let them know. They can check our website and/or give Pastor Bruce a call if they want more information.

Our sessions will run from **January 25 to April 19, 2011**. We will meet each Tuesday evening

from 7:00 to 8:30 p.m. To register contact the church office or go to our website www.bethelmankato.com.



Bethel Worship Notes

Many of you know I am a Green Bay Packer fan and am excited about them being in the Super Bowl!!! so this makes loving the Steelers a hard thing for me right now.

On a serious note, it's one month into the New Year already, how are you all doing at loving God with all of your heart, soul, mind, and strength? How are you and I doing at putting our faith into action?

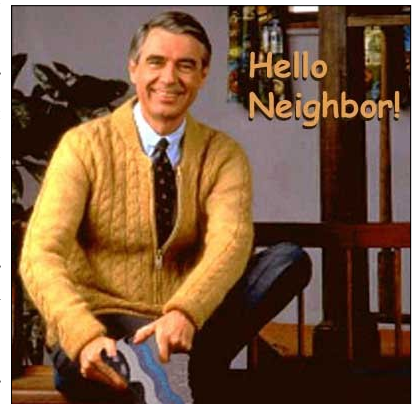
Last month in my article I reference a scripture in Luke 10:27 stating that Jesus spoke "to Love the Lord your God..." As I looked closer at Luke's account of this encounter with Jesus, I realized that this was an expert in Jewish law who spoke these words from Deuteronomy 6 to Jesus in response to a question that Jesus asked of him. I discovered in Matt. 22:37-39, on a different occasion, it is Jesus who quotes Deut. 6. (To love the Lord your God...) Jesus quoted this scripture in response to a question from a Pharisee as to what the greatest

commandment is. In the Matthew encounter (verse 39), Jesus goes on to say "And the second like it; Love your neighbor as yourself."

So who do you think Jesus meant by the term "neighbor"? We can get a good clue into the answer to this as we look at the way Jesus responded to this same question back in the other encounter with the expert of Jewish law (Luke 10:27). Jesus responds by telling a story (Parable) of the "Good Samaritan."

The answer is pretty clear; our "neighbor" can be **any one that God may place in our path or journey of life that may need our help.** Will this be easy to do? Most likely not! If you look at the Good Samaritan and think about the "neighbors" in our lives, it is going to cost us something. It may cost us our time, our money, and even our emotional

energy. As we obey and fulfill this "2nd commandment", we will be expressing our love for God and will be fulfilling the "greatest commandment" as well. So I will ask again; *how are we doing at loving God and our "neighbors" this year?*



The Worship Ministry at Bethel is committed to leading others to respond to grace, greatness and glory of God. God's richest blessings to all of you this February, may you love the Lord with all you are!

Pastor Glenn
pastorglenn@bethelmankato.com

Winter
Worship Gathering
All worship ministry members & those interested in being a part of this ministry, are invited to come **Thursday, Feb. 3rd at 5:30p.m.-7:30p.m.** Bring a few \$\$ for a pizza supper.





Drama Ministry Opportunity

The Worship Team is putting together a series of video segments to be used during our worship services. If God has gifted you or you have an interest in the area of drama/acting and want to learn more, meet after the 11:00 service on either the 2nd or 3rd Sunday in Feb.

Watch the bulletin for further updates. Please contact Pastor Glenn at pastor-glenn@bethelmankato.com or Jeanne Madson at jmadson@navitor.com for more info.



Youth Group News

Thank You's...

Thanks to the most amazing youth ministry team ever: Rachel & Adam Petit, Coralyn Musser, Troy Kloster, Carol Edwards, Rob & Heather Milton, Angie Johnson, Tyler Madson, and Melissa Carver. You have done more than drive, cook, clean, chaperone, and teach. You have loved these students into the Kingdom. I continue to be humbled by your dedication and passion for students.



"Gather your warm gear
& sleds. We're going
Sledding!"

February Schedule

<u>Date</u>	<u>Event</u>	<u>Time</u>
2/2	Senior High-iMPLODE! Junior High-Xplode! Service Project	6-8 pm
2/9	Senior High-Xplode! Sledding Junior High-iMPLODE!	6-8 pm
2/14	Valentine's Day	—
2/16	Youth Worship Nite	6-8 pm
2/21	President's Day	—
2/23	Senior High-iMPLODE! Junior High-Xplode! Sledding	6-8 pm



Youth Group News-Continued

Service Project...

Last month Senior High took apart used walkers and crutches for VINE. This month Junior High will be performing a Service Project on Feb. 2nd. We will be building bird houses for senior citizens at the Summit Center. This is another opportunity to share our love for Christ by getting out in the community and serving them.



Sledding...



Get ready to launch down one of the largest sledding hills in southern Minnesota with nothing else to protect you but a scarf and a flimsy sled. Senior High will be sledding on the 9th and the Junior High will be on the 23rd. Dress warm and remember to bring a sled.

Mega Rally...

Sunday, March 6, 2011 6:00-8:00 p.m. Bethel University, St. Paul

Cost is \$4 by March 1st, \$6 there after

Musical Guest: Stellar Kart

Speakers: Craig & Molly Sanborn (The Cheese Ball Chick)



Spring Blitz...

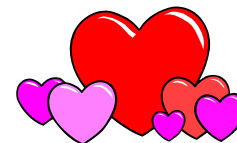


Senior Highers, mark your calendars to join over 3,000 youth in Duluth on April 1-3, 2011. Cost is \$69.00 +\$\$ for meals. (Plus \$10 for vertical endeavors if you want to climb or \$5 to go on Timber Twister Roller Coaster.)

"Hey, Youth! There is a Mega Rally and Spring Blitz coming. Don't miss it!"



85% of all Valentine cards are bought by women. 73% of flowers are bought by men, and only 27% are by women. Chocolate and candy sales reach profits of \$1.1 billion during Valentines.



Young Adults Ministry

by Christian Kohs

Young Adults Lunch February 13th!

Let's all share a great meal together and take some time to chat and get to know one another.

Here are a few "Highlights" that I had for 2010 and have for 2011:

-The On Campus Bible Study - Has gone from 3 guys last semester to 6 this semester + 2 of their girlfriends.

-Film and Theology - Began in January and we had 10 people show up.

-10-20+ young adults are coming to the lunch every month and engaging with each other.

-People are getting involved and beginning to find people to "disciple".

-I pray that our young adults will continue to seek a deep yearning and desire to "know" and to learn the deep things of Jesus and Christianity...

-I hope that a couple of people will come onto the team and lead other things that we can reach out to young adults with...

If you are interested, please contact me at:

Christian.kohs@proresgroup.com

Film and Theology is off and running! Please join us this month for another night of pizza, fellowship and movie entertainment.

**February 22nd @ 5:30 in
Room #13**

At the cross we see that the love of God is not merely sentimental but also effective. When people speak of love, they usually mean an emotional love that feels affectionate but may not do anything to help the beloved. Thankfully, God does not merely feel loving toward us; his love actually compels him to act on our behalf so that we can be changed by his love. Jesus died for our sins, thereby enabling us to experience new life. Jesus lived as our example showing us what it means to live a truly holy human life.

Who can we show the Love of Christ to?.....and buy them some candy and flowers too!

"Who can we show the Love of Christ to?...and buy them some candy and flowers too!"

Praise & Prayers



There is a prayer group that meets on Wednesdays at 4:00 p.m. to pray for our attendees, their families & friends, and those in our community. If you would like to be part of this group, contact Suanne Banfield at (507) 388-4432 or banfield@hickorytech.net or come and meet us at church on Wednesday.

- * Praise that **Heather Milton** received a new job opportunity
- * Pray for **Daniel & Kay Karvonen's daughter, Sherry**, who has cancer
- * Pray for **Carole Anderson and her mother** who have health concerns
- * Pray for **Carole Anderson's brother's family** who continue to face challenges after their house flooded
- * Pray for **Cita Maignes, Angie Hoffman & the McGowans** on the mission trip to the Philippines
- * Pray for all involved in the wake of the **Arizona tragedy**
- * Pray for a **friend of Ann & Glenn Winch, Jake** (12 yrs. old) who will have to have a foot & some fingers amputated due to a rare disease
- * Pray for **Alice Jensen** as she is struggling with severe pneumonia
- * Pray for our **Missionaries of the Month: Bob & Barb Bartz**
- * Pray **God's leading and blessing** in our days of growth & change
- * Pray that **Bethel** will be a church that is culturally relevant and a transforming power in our community
- * Pray that we will see **people coming to faith in Jesus** at Bethel on a regular basis
- * Pray that **we all** reach out to others & plant seeds of hope in Jesus
- * Pray that **we as a congregation** will be able to warmly welcome & incorporate all of the new people God brings our way
- * Pray for our **sister churches in Votlivka & Tenovka, Ukraine & Cadunan, Philippines**
- * Pray for the **peace of Jerusalem**, Psalm 122:6
- * Pray for **our troops** around the world
- * Pray for a **speedy resolution** to the crisis in Iraq

Family & Friends Serving Overseas:

- * **Nick Berry** - nephew of Shawn & Gwen Berry



*"Praise be to the God and Father of our Lord Jesus Christ, the Father of compassion and the God of all comfort."
2 Corinthians 1:3*





Children's Ministry-Nursery

Londa Krueger is our Nursery Coordinator. If you are interested in helping out in the nursery just give her a call at (507) 385-1374.



<u>Date</u>	<u>Time</u>	<u>Infant</u>	<u>Preschool</u>
Feb. 6	8:30	Rick & Londa Krueger	Dani Burroughs & Tyla Krueger
	9:45	Steve & Amber Rick	Sunday School
	11:00	Jake & Angie Johnson	Ben & Amber Honsey & Rachel Anderson
Feb. 13	8:30	Bryce & Jackie Anderson	Herb & Michelle Scott
	9:45	Joey & Shannon Ruzic	Sunday School
	11:00	Suanne & Elizabeth Banfield	LeAnn Wilcox & Ashley Anderson
Feb. 20	8:30	Mike & Kari Hennegar	Sandra Tambi & Abby Cherney
	9:45	Carol Edwards & Jenny Schommer	Sunday School
	11:00	Chad & Brooke Riley	Peters Family
Feb. 27	8:30	Jon & Breanna Nickel	Michael & Nighi Anderson & Lauren Daly
	9:45	Candace Kolander & Monica West	Sunday School
	11:00	Jackie Nagel & Elizabeth Banfield	Sarah Ruggless & Jan Johnson

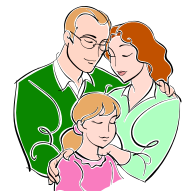
"Bethel's nursery is a great place for nurturing children."



Meets on Wednesdays 6:00-7:45 p.m.



February 2011 Schedule
 2/2 Regular Club Night
 2/9 When I Grow Up Night
 2/16 Regular Club Night
 2/23 Parent's Night



Children's Ministry-Sunday School Offering

Our Sunday School children brought their offerings in September to December to give to Samaritan's Purse. We collected \$231.00.

We were able to purchase:

- 2 - Dairy Animals
- 3 - Broods of baby chicks
- 3 - Sport Gear Packs
- 6 - Milk for a week for a child

Thanks for bringing your offerings each Sunday for Samaritan's Purse

Our offerings from January until May will go to Kid's Against Hunger. Last year we had 50 people help us fill over 9000 bags of food. We need to collect the money for the bags we pack. Let's continue to bring our offerings and tell your friends and family they can give also.

Support Groups



Do you know someone who is hurting due to marital separation and/or divorce?

It is very likely that they would be greatly blessed by some sound Biblical teaching and some caring support and encouragement from others who have also suffered loss.

Please let them know. They can check our website and/or give Pastor Bruce a call if they want more information.

Our sessions will run from **January 25 to April 19, 2011**. We will meet each Tuesday evening from 7:00 to 8:30 p.m. To register contact the church office or go to our website www.bethelmankato.com.



The National Alliance on Mental Illness-Mankato offers the Connection Support Group every **Thursday** at 6:30 -8:00 p.m. This is for anyone who lives with a mental illness.

There is also a support group for family members. It meets the **2nd & 4th Thursdays** of the month at 6:30 p.m. Both groups meet here at Bethel.

"Look for 'Set Apart', a faith-filled conference for women on March 4 & 5."

Faith Conference for Women

On Friday & Saturday, March 4 & 5, Northwestern College is sponsoring "Set Apart", a faith-filled conference for women. "Set Apart" offers a treasured time to get away—by yourself or with friends—to hear from God's Word. Keynote speakers will be

Candace Cameron Bure & Lisa Harper.

For more information and to register visit nwc.edu/setapart. To register by phone or group registrations, call 866-821-5151. Cost is \$89 for both days or \$50 for one day.





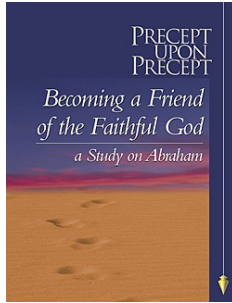
Bible Studies

Cindy Hoines is offering the 2nd part of a 10 week Precept-Upon-Precept study on the book of Genesis. She will be covering the flood and the nations beginning February 1st at 7:00 p.m. in room #11. This group will meet for 5 weeks.

On March 8th they will begin a 6 week course titled "Becoming a Friend of the Faithful God: A Study on Abraham."

Learn the principles and

truths from the life of Abraham, the friend of God, that will ground you in your faith, challenge you in your walk, and give you hope in your future. In the life of



Abraham, we see God's choosing and the further unfolding of His redemptive plan. We learn more about God's character and His relationship with us in Abraham's example. Learn

how man becomes righteous,

how God keeps His promises, and how God protects those who are His. Take comfort in your covenant partner and rest in His faithfulness.

Books for this course will need to be ordered **no later than February 15th**. The cost of the workbook is \$13.50. Contact Cindy Hoines if you are interested in registering for this study: hoines@hickorytech.net or 507-345-8069.

"Check out the Precept-Upon-Precept Bible study being offered starting March 8th."

Mankato Salvation Army Emergency Disaster Team

There will be an informational meeting for the Mankato Salvation Army Emergency Disaster Team on Thursday, February 10—7:00 p.m. at The Salvation Army Chapel, 700 S. Riverfront Dr. (507-345-7840)

The Salvation Army is looking for volunteers like

you to become part of their team as they gear up to face and serve the communities and people in need during predicted and inevitable spring flooding. Opportunities to serve might be from making sandwiches here at our Mankato campus to actually being in the distressed

areas assisting those directly affected by the flooding. They need your help!



Habitat for Humanity

Habitat for Humanity of South Central MN is a non-profit, Christian housing ministry dedicated to building simple, decent and affordable housing with and for families in need. These families are of low to moderate income status and would not otherwise qualify for a conventional loan. Families are required to invest 200 hours in "sweat equity" per adult—that is, time spent

building their own home and other Habitat homes. Because houses are built or renovated using as much volunteer labor and donated materials as possible, mortgage payments are kept reasonable.

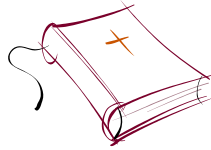
Habitat for Humanity is accepting applications for families that are interested in owning a Habitat Home to be built in 2011. If you are renting, have low to moderate

income, need housing and willing to partner with Habitat, we may be your answer. Habitat builds homes for families at 0% interest for a 25 to 30 year mortgage. House payments run approximately \$500 per month. Families are required to assist in the building process. For more information and an application please call the Habitat office 507-388-2081.

Senior Adults

Men's Bible Study-

Mondays @ 9:00 a.m.



Senior Adult Lunch-

Wednesday, February 23rd @ noon

Bethel Financial News

BETHEL BAPTIST CHURCH					
Giving and Attendance (last month and year-to-date)					
through December 2010					
	2010	Budget		2009	
Operating Funds	Giving	Dollars	%Variance	Dollars	%Variance
December	\$52,146	\$49,315	5.7%	\$47,919	8.8%
Year-to-date	\$442,647	\$457,450	-3.2%	\$437,389	1.2%
Operating Costs	\$453,260	\$482,321	-6.0%	\$436,176	3.9%
In keeping with church practice, spending for operations has been adjusted from budget in proportion to gifts received.					
	2010	Budget		Last Year	
XtremeSteps	Giving	Dollars	%Variance	Dollars	%Variance
December	\$13,879	\$39,775	-65.1%	\$36,781	-62.3%
Year-to-date	\$130,312	\$182,767	-28.7%	\$169,158	-23.0%
Loan Payments	\$176,421				
YTD Surplus/(Shortfall)	(\$46,109)				
You can find YTD financial statements on top of the mailboxes next to Pastor Glenn's office under the YTD Financial Reports sign.					

	2010	2009	
Attendance	Average	Average	%Variance
December	266	284	-6.3%
Year-to-date	313	320	-2.1%

Missions Page



Missionaries of the Month - Bob & Barb Bartz

Bob and Barb were members of First Baptist Church (BGC) in Fergus Falls, MN, when they were led by God into full-time ministry.

They spent 17 years with Far East Broadcasting in the Philippines. Now they have been in Pretoria, South Africa, for 4 years. Bob is the broadcast technology director for Africa with FEBA Radio, FEBC's sister organization.

Bob travels extensively throughout southern Africa, providing technical support for many radio stations which reach out to people with the good news of Jesus Christ. As you can imagine, this presents many challenges in working with different cultures, personalities, governments and equipment. Since August, Bob has had trips to West Africa, Tanzania, the UK, Swaziland, Zimbabwe, and Mozambique.

Barb volunteers 3 days a week in the FEBA Radio South Africa office in Pretoria, assisting the office staff with correspondence, financial details, and with English publications sent out to some financial supporters.

The Bartzes' children, Nathan and Emily, are in the U.S. Nathan is in grad school in Minot, ND, and Emily is working in Fargo, ND.

Right now Bob and Barb are on a 3-month home assignment. They were able to spend the holidays with their kids and Bob's mom. Now they are traveling around the U.S. to share with churches and individuals about their ministry.

Some prayer requests:

- Pray for additional financial support needed to return to Africa.
- Pray for safe travel around the country and back to Pretoria, and for a time of encouragement and renewed relationships.
- Pray for radio teams in Zimbabwe and Mozambique going through major changes because of financial pressures.

“Bob travels extensively throughout southern Africa, providing technical support for many radio stations which reach out to people with the good news of Jesus Christ.”

BOB AND BARB WILL BE WITH US HERE AT BETHEL THE WEEKEND OF FEBRUARY 12-13.

Philippines Team Update

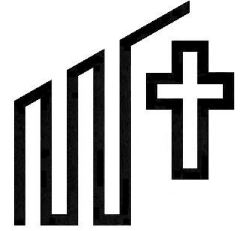
Cita Maignes and Angie Hoffman are busy in the Philippines, visiting our sister church, Bethel Fellowship. They will arrive home on

Feb. 1. Please continue in prayer for their safe return. We will give you a full update next month after they come home.





Bethel Baptist



BETHEL BAPTIST
CHURCH

1250 Monks Ave.
Mankato, MN 56001

Phone: 507-345-4011
Fax: 507-345-4008

E-mail: office@bethelmankato.com
Text Messages: 507-291-9981

*Transforming lives
through the love of Christ*

Senior Pastor: *Dr. David J. Banfield*
Pastor of Adult Ministries: *Dr. Bruce Nelson*
Pastor of Student Ministries: *Harrison Musser*
Pastor of Worship Ministries: *Rev. Glenn Winch*

Sunday Worship Services

Family 8:30 AM
Traditional 9:45 AM
Contemporary 11:00 AM

Sunday School 9:45 AM
Nursery is Available During All Services



BETHEL IS COMMITTED TO:
Connecting people to God and others
Equipping people to serve God and others
Engaging people in service for God and others

Pastor Dave's Corner Continued

long and high and deep is the love of Christ, and to know this love that surpasses knowledge—that you may be filled to the measure of all the fullness of God. (Ephesians 3:14-19)

Once we have accepted God's great love for us we can begin to reach out to others. The only way we can beat the demon of loneliness is to take responsibility for our lives. We can refuse to let loneliness win. As I look back on my experience in college, I spent way too many nights by myself in my dorm room. Take the initiative to connect with other people. Do it with no strings attached. We cannot expect other people to meet all of our emotional and social needs. Instead of look-

ing for what you can get from others, intentionally see what you can give to others. Explore new things. Friendship is most often formed around a shared experience or passion. Find ways to get involved that match who you are.

I want to encourage you. You are not alone. You have not been abandoned. You are loved with an everlasting love. Now go find the Eleanor Rigby or Charlie Brown in your life and share the good news.



Dear Bethel Family:

We want to thank you for your kindness and generosity to us over the Christmas season. Thank you for the corporate gift that you gave us as well as the other gifts of appreciation. We continue to count it a blessing to serve the Lord with you here. May God grant us a great year of ministry in 2011.

Pastor Dave, Suanne and family

